

Francis Field

Revised Master Plan, 2019

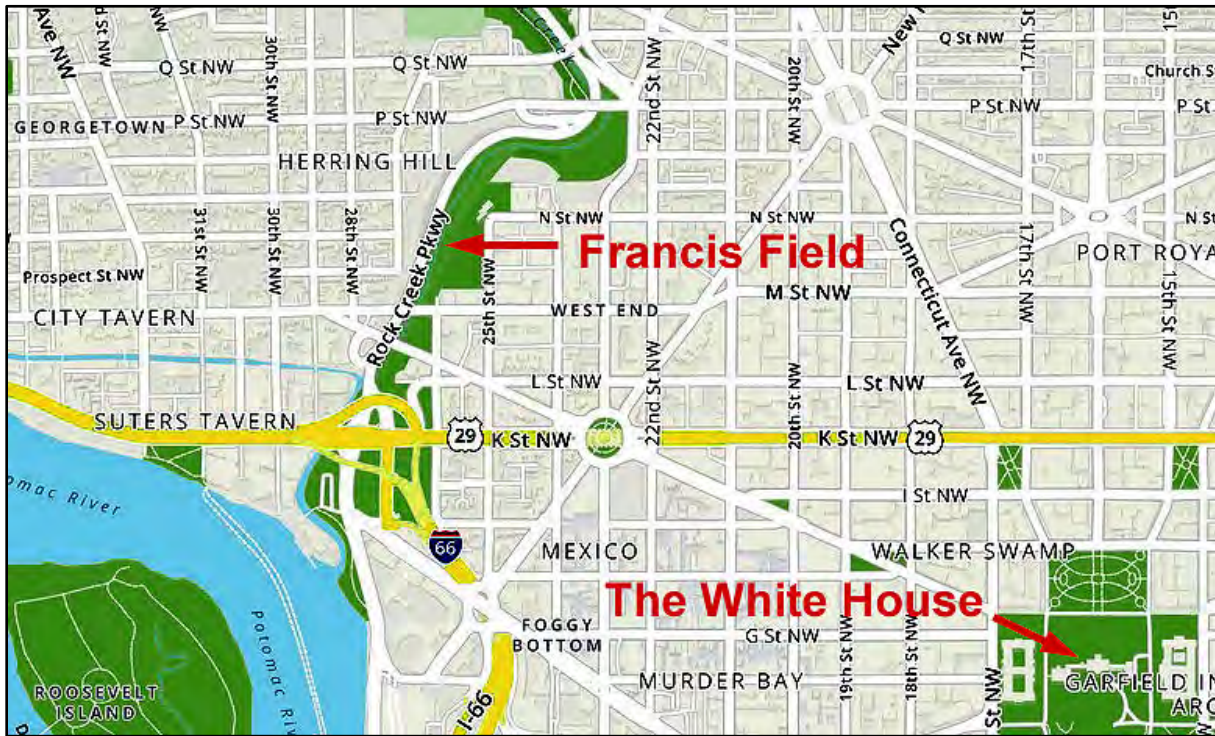


January 7, 2020

Location and Jurisdiction

Francis Field is a public park and recreation facility located in the District of Columbia on the west side of 25th Street NW, between M and N Streets.

Its location is shown on the detail of a Mapquest map below, with the White House location indicated for reference.



It is partially owned by the National Park Service and is part of Rock Creek Park. The eastern side of the field was transferred to the jurisdiction of the District of Columbia in 1967, in interim legislation for Home Rule government in the District.

The entire field is managed by the District's Department of Parks and Recreation (DPR), which issues permits for its use.

The 2009 Master Plan

A “landscape plan for Francis Field” was ordered by the District of Columbia Zoning Commission in Z.C. Case No. 06-35, on July 9, 2007, as an amenity in a Planned Unit Development for Square 24, Lots 109 and 883. In addition to a new, ornamental fence, it was to include “the addition of trees, park lighting, furniture, trash receptacles, and a drinking fountain.” Following the approval of the plan by DPR, it was to be implemented by the zoning applicant.

As required by federal law, the plan was submitted to the U.S. Commission of Fine Arts (CFA) for review on January 9, 2009. After review and resubmission with changes, it was approved by the CFA on September 17, 2009, in Case CFA 17/SEP/09-8. It is shown below.



The Need for a Revised Master Plan

A dog park was added to the DPR section of the field in the fall of 2015. During the same year, DPR granted a construction easement for the conversion of the building at the south of the field from mixed-use office and residential, to total residential. The construction plans extended the building to the legal property line.

A comparison of the actual field conditions in April 2016 with the 2009 plan showed the need for revision of the plan, as shown in the photograph and drawing below:



Interim Plan for Tree Planting

Plans by Friends of Francis Field (FFF) to improve the field further by planting trees and attempting to restore living turf on the playing field required a drawing of actual conditions, showing the location of existing trees, and locations where additional trees could be planted according to the 2009 plan.

The landscape architecture firm that drew the 2009 plan was engaged by FFF to produce the drawings for the tree-planting. They are shown below.



In May 2017, 43 trees were planted by in conjunction with the Casey Tree Foundation, with the permission of DPR and Rock Creek Park.

Revised Master Plan

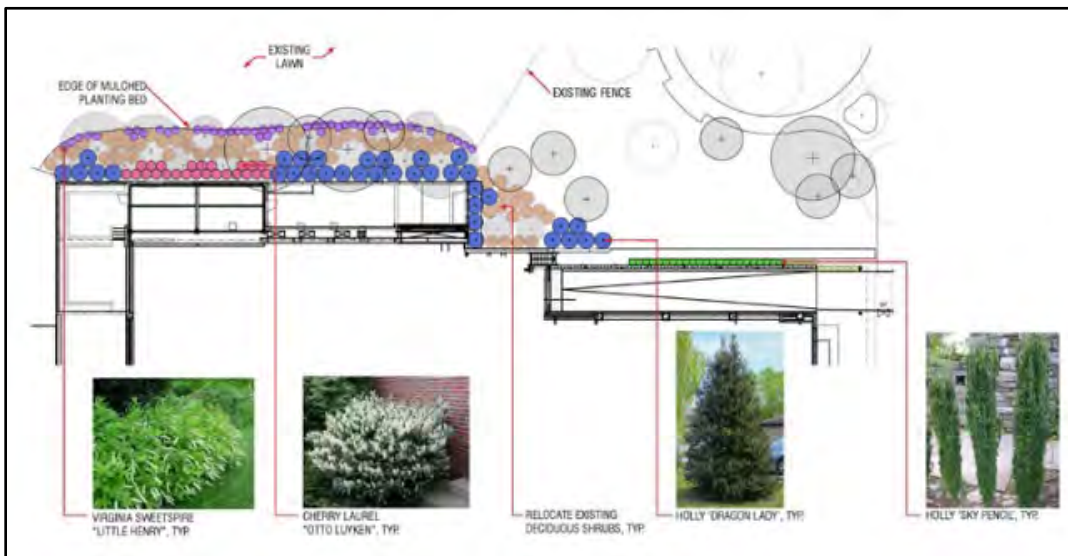
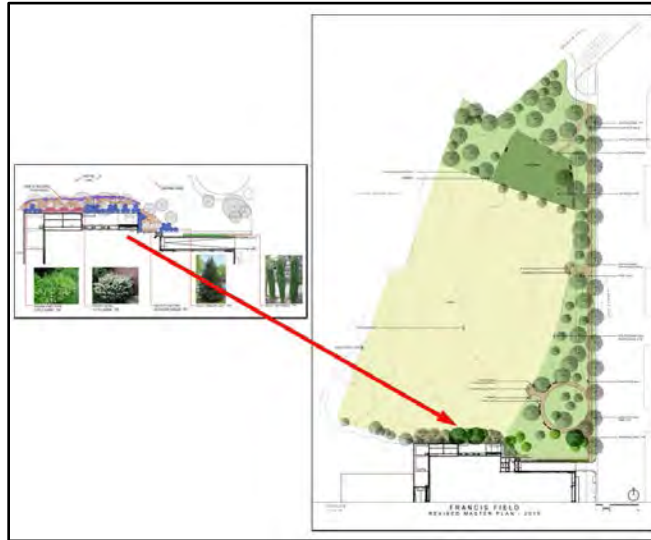
The tree-planting plan became the basis for the revised master plan, which essentially records existing conditions.



No change or additional plantings are indicated or planned for the NPS portion of the field. The existing pedestrian gate on the west side of the field, which was not marked on the 2009 plan, is now indicated.

Sub-Plans

On the DPR section of the field, some landscaping that was disturbed by the construction easement is indicated to be replaced and enhanced. This is one of two sub-plans included in the master plan.



Additional Tree Sub-Plan

The District Department of Transportation in July 2018 requested to plant an additional 11 trees in this same rear-field area.

This became a second sub-plan.



Approvals

The landscape plan, with its sub-plans was presented in a public meeting on February 21, 2019, to Advisory Neighborhood Commission 2A, the jurisdiction in which the field is entirely located.

That commission passed a unanimous resolution of support, which was sent to DPR on March 3, 2019.

DPR Director Delano Hunter approved the plan on December 4, 2019.